

# Houston Chapter *Newsletter*

## May 18 Meeting

### *Leading a University to New Heights*

**Renu Khator, President, University  
of Houston and Chancellor,  
University of Houston System**



Renu Khator, president of the University of Houston and chancellor of the UH System since January 2008, is the first Indian immigrant to head a comprehensive research university in the United States. During her inaugural year, the UH System experienced record-breaking enrollment and private support. A noted scholar in the field of global environmental policy, Khator is widely published and received her Ph.D. from Purdue University. Prior to her appointment at UH, she was provost and senior vice president at the University of South Florida, capping a 22-year career at that institution.

## Professional Development Session: *Top issues for Financial Executives in 2010*

**Colleen Cunningham, CPA  
Global Managing Director,  
Accounting & Finance  
Resources Global Professionals**



This session will review some of the top of mind issues that financial executives are dealing with in 2010, including the impact to companies of Healthcare reform, Financial Regulatory reform and potential tax reform. Additionally, the SEC has reiterated its support for a roadmap to move to IFRS, and the FASB and IASB continue to work on converging "big-ticket" areas such as financial instruments, financial statement presentation, revenue recognition and leasing. Session attendees will have a high level understanding about these priority issues at the end of the session.

Colleen Cunningham is an internationally recognized expert on corporate financial reporting and accounting, as well as former advisor to the FASB and the IASB. Colleen served as CEO of Financial Executives International (FEI) for nearly four years, during which time she had significant influence in legislative and regulatory matters including Sarbanes-Oxley, pension reform and financial accounting standards. Colleen currently leads Resources Global Professionals' Accounting and Finance practice which provides financial reporting expertise to Fortune 1000 companies through its over 85 offices around the world. She speaks and writes frequently on a variety of finance and accounting issues both in the US and internationally.

Cunningham began her career in public accounting with the firms formerly known as Touche Ross and Coopers & Lybrand. She then spent thirteen years with AT&T as assistant controller of AT&T Capital, and later as vice president and chief accountant at AT&T Corporate where she was part of the leadership team that executed the Lucent and AT&T Wireless initial public offerings. Cunningham also served as senior vice president and chief financial officer, North America, of Havas Advertising (NASDAQ: HAVS), at the time, the fifth largest advertising holding company in the world. At Havas, Cunningham was responsible for North American financial operations, including real estate,

FEI Houston Chapter  
P.O. Box 631206  
Houston, TX 77263-1206  
Tel: 713.223.0334  
Fax: 713.776.1308  
[info@feihouston.org](mailto:info@feihouston.org)  
Chapter Administrator  
Terry K. Newton

## In this issue...

**President's Letter...2**

**Officers & Chairs...2**

**Career Services...3**

**Calendar of Events...3**

**FEI Sponsors...4**

**Registration...4**

## May 18 Meeting & P.D.

Houston Country Club  
1 Potomac Drive

P.D. Session (4:30pm):

**Colleen Cunningham**

*Top Issues for Financial*

*Executives in 2010*

Social Hour:(5:30 pm)

Dinner (6:30 pm):

**Renu Khator**

**University of Houston**

*Leading a University to New  
Heights*

[Page 4 - Registration](#)

## May Meeting Sponsors



## A Letter from the President...



It is hard for me to believe that the last chapter meeting of the year is on Tuesday, May 18, 2010, at the Houston Country Club. Don't forget that this meeting is our spouse's event, so please bring your spouse if you can so they can see what a wonderful organization you belong to.

I know we will be treated to a very interesting talk from our dinner speaker, **Dr. Renu Khator**, the eighth chancellor of the University of Houston System and thirteenth president of the University of Houston. Before assuming the position in January 2008, she served as provost and senior vice-president at the University of South Florida. Khator is the first foreign-born president of the university, and the second woman to hold the position. She is also the first Indian American woman to lead any major American university.

We want to especially thank **Resources Global Professionals** for increasing their sponsorship level to a Platinum Sponsor this year. I am very excited that Colleen Cunningham with Resources Global and former President and CEO of Financial Executives International, will be presenting our professional development program at 4:30 PM. Colleen was our dinner speaker during her tenure as FEI President and CEO several years ago and we want to give her a big Houston welcome back.

We welcome **Lockton, Inc.**, as our gold sponsor for May. Since this is Lockton's first year as an FEI sponsor, please make sure to say hello to their representatives and thank them for their sponsorship. In case you aren't aware of Lockton, Lockton is the world's largest, privately owned, independent insurance broker.

Since this is my final newsletter as your chapter president, I wanted to thank all of you for making this year truly meaningful. A special thank you to Terry Sanford for filling in for me the last three months while I have been in Saudi Arabia on business. I know that I am leaving the chapter presidency in very capable hands for the future. I am personally blessed to have so many good friends within the Houston chapter and also within FEI across the country. I was able to attend the Annual Summit in late April in Las Vegas and can report that FEI is strong nationwide with over 800 attendees at Caesar's Palace.

I hope you all have a wonderful summer and maybe some rest and relaxation before we get together again in the fall.

Tony O'Dell, President 2009-2010  
[aodell@kforce.com](mailto:aodell@kforce.com)

---

## Colleen Cunningham

from page 1

human resources, tax, controller and treasury functions, SEC and U.S. GAAP reporting and worldwide accounting policies, as well as establishing and staffing the company's North American headquarters.

Cunningham has frequently been named as one of the top 100 influential people in finance by Treasury & Risk Management magazine, one of the top 100 influential people in accounting by Accounting Today, and one of the 60 top influencers in finance by Business Finance. She spent several years as a member of the standards advisory committees of both the FASB and the IASB. She has appeared as a subject matter expert on several financial related television shows and is widely published in financial magazines.

She is currently a columnist for Compliance Weekly and sits on the Board of Directors for the Ethics Resource Center, and chairs its Finance Committee, and the Advisory Committee to Pennsylvania State University's Accounting Department. Cunningham earned a Bachelor of Arts in Economics from Rutgers University in New Brunswick, New Jersey, and an MBA in Management from New York University's Stern School of Business, where she was a Stern Scholar in the Executive Management Program. She resides in Rockaway Township, New Jersey with her husband and their five children.

## FEI Houston Officers & Committee Chairs

**President**  
**Tony O'Dell, CPA**  
Kforce

**President-Elect**  
**Terry E. Sanford**  
Carriage Services, Inc.

**V.P. – Programs**  
**Dominic Fillippa**  
Seal Tech, Inc.

**V.P. Membership**  
**Carla Mashinski**  
SBM Atlanta  
**Rebecca McCulloch**  
HSBC

**V.P. Sponsorship**  
**Charles "Chuck" Fischer**  
Hewlett-Packard Company  
**Phil Denning**  
Shell

**V.P. Academic Relations**  
**Mark Vise**  
Intertek

**V.P. Prof. Development**  
**David Boersma**  
Ameron International Corp.  
**Brett Clapsaddle**  
InterMarine Incorporated

**Secretary**  
**Dawn Smajstrla**  
Anadarko

**Treasurer**  
**Derek Groenewold**  
Petrocom Energy Group, LLC

**Immediate Past President**  
**J. Chris Brewster**  
Cardtronics, Inc.

**Communications Chair**  
**John D. Thomas**  
RMI Physicians Services, Inc.

**Scholarship Endowment Chair**  
**Sterling McDonald**  
Evolution Petroleum Corp.

**Social Events Co-Chairs**  
**Thea Marino**  
Sirius Solutions  
**Gerry Trostle**  
Enerfin Resources Co.

**FERF Liaison Chair**  
**Bruce Misamore**

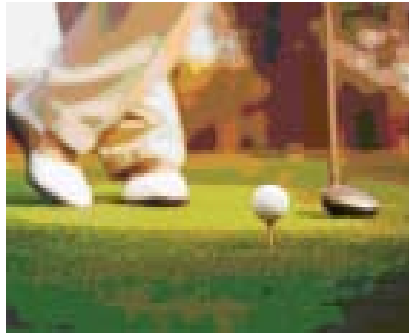
**Member Career Svcs Chair**  
**Eric A. Khan**  
Hydro-Chem

See FEI Houston Directors,  
Page 3

# FEI Houston Chapter Annual Golf Tournament

*Submitted by Gerry Trostle*

The annual golf tournament was held on Friday, April 23rd at Blackhorse Golf Club. After threatening early morning weather, the afternoon turned out to be a perfect day for golf. Ninety-seven members, guests and sponsors played this year. While we had fewer golfers than last year, the more manageable number resulted in finishing in less than 5 hours. FEI would like to thank our Gold sponsor – Bank of America for their continued support and contribution to the tournament. Thanks also to Horn Solutions and Mike Vitek for their raffle prize donations.



The putting contest continues to be a popular event during the tournament. Although 12 teams had at least one golfer sink a 10' putt and win a sleeve of balls for everyone in the group, no one was able to sink the 30' putt and get the chance to try a 50' putt for \$5,000. I want to thank all the volunteers who kept everyone honest – Jim Storfer and Chuck Fischer (FEI members), Laura Clendenen (Enerfin) and Kim Parker and Neha Shah (Kforce).

If you have any comments about the tournament, please contact me and let me know how we can improve it. Lastly, thanks to my committee members, Ed Conner, Bob Baker, Tony O'Dell and David Boersma, for their time, effort and advice.

## FEI Golf Tournament - 2010 Awards

### First Place

*Net Score - 62*  
Tom Himmer  
Rob Robinson  
Philip Schlom  
Tom McEntire

### Second Place

*Net Score - 62*  
Jason Harris  
Blake Stoehr  
David Boersma  
Mike Vitek

### Third Place

*Net Score - 64*  
Mil Jones  
John Bingham  
Riley Epps  
Ben Jones

### Straight Drive

A - Chris Goodwin  
B - John Beall  
C - Justin Beall  
D - Tom Imre

### Closest to Pin

A - Tom McEntire  
B - Paul Montella  
C - Charles Turner  
D - Jim Fereday

### Raffle Prize Winners

*3 wood*  
Charles Welch

*Hybrid*  
David Boersma

*Putter*  
Stan Farmer

*4 Blackhorse passes*  
James Tortorice

*Astros tickets (donated  
by Horn Solutions)*  
John Thomas

*Igloo coolers (donated  
by Mike Vitek)*

Paul Marsh  
Allyn Skelton  
Phillip Schlom

### 30' Putt Winner

None

### 10' Putt Winner

Ed Conner  
John Dorrance  
Kevin Gruen  
Jeff Edge  
Roger Robinson  
John Sisler  
Rob McIntosh  
Tim Mills  
Jim Davis  
Don Konkol  
Garry Russell  
Scott Fields  
Marek Ruzicka  
Charles Welch  
Chuck Hill  
Ryan Duzek

## FEI Houston Chapter Directors

**Mimi Alciatore**  
University of Houston

**Jerry Blurton**

**Jeff Curtiss**  
KBR

**M. Colleen Estes**  
Sirius Solutions

**Thomas M. Imre**  
Enerfin Resources Co.

**Chris Matlock, CPA**  
Chris Matlock CPA

**James R. Storfer**  
Sirius Solutions

**Michael J. Vitek**  
Igloo Products Corp.

**David Young**

## Calendar of Events

**May 18**

**Monthly Meeting**

**Dr. Renu Khator**

University of Houston

*Leading a University to New  
Heights*

**Prof. Development**

**Colleen Cunningham**

Resources Global  
Professionals

**September 21**

**Monthly Meeting**

**Prof. Development**

Fulbright & Jaworski

All meetings listed here will be held at Houston Country Club unless otherwise noted on our website [www.feihouston.org](http://www.feihouston.org).

## 2009-2010 Strategic Partners

### Platinum Sponsors

**Axia Resources**  
**Bowne of Houston**  
**Fulbright & Jaworski**  
**Hein + Associates**  
**KPMG**  
**Oracle**  
**Resources Global Professionals**  
**Sirius Solutions**

### Golf Sponsors

**Bank of America**

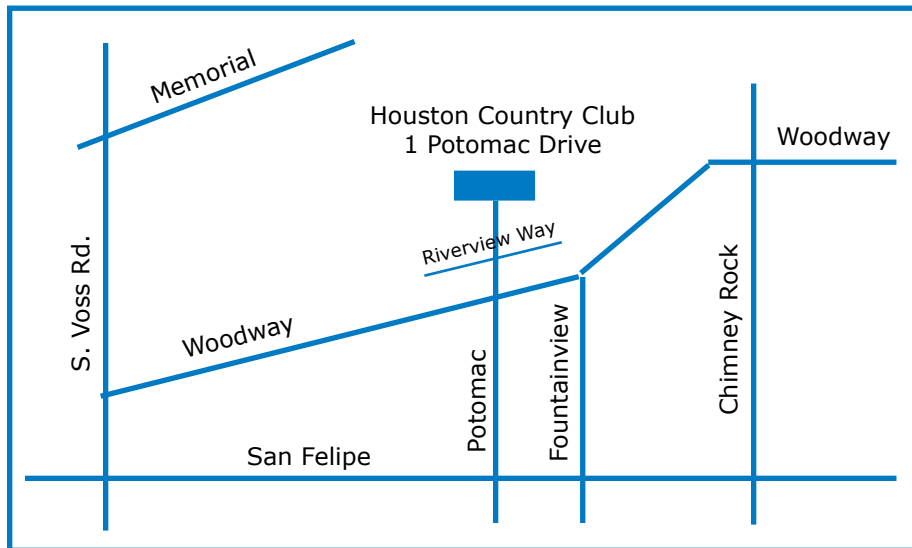
### Gold Sponsors

**BKD, LLP**  
**Gainer, Donnelly & Desroches, LLP**  
**Horn Solutions, Inc.**  
**KFORCE**  
**Lockton Companies LLC**  
**Outsource Partners International Inc.**  
**UHY Advisors TX, LLC**  
**Wells Fargo Bank**

***Secure your FEI sponsorship today!***  
 Contact Phil Denning at [phillip.denning@shell.com](mailto:phillip.denning@shell.com) or Chuck Fischer at [chuck.fischer@hp.com](mailto:chuck.fischer@hp.com)

## May 18 Meeting & P.D.

Houston Country Club  
 1 Potomac Drive  
 P.D. Session (4:30pm):  
**Colleen Cunningham**  
*Top Issues for Financial Executives in 2010*  
 Social Hour:(5:30 pm)  
 Dinner (6:30 pm):  
**Renu Khator**  
**University of Houston**  
*Leading a University to New Heights*



## May Meeting Sponsors



### May Fax/Mail Reservation Form

[Click Here to Register Online](#) or go to [www.feihouston.org](http://www.feihouston.org)

Mail to: P.O. Box 631206, Houston, TX 77263-1206 or Fax to: 713.776.1308  
 One form per registrant please, photocopy as necessary.

**Reservations Required** by 3:00 pm 2 business days before the meeting. may be canceled without cost as late as noon the day before the meeting. "No-shows" will be billed \$90.

**Meeting Location:** *Houston Country Club* - 1 Potomac Drive

**Meeting Cost:** No charge for Chapter Members and 1st time prospective members. Guests -\$90/person (guests & prospective members must be accompanied by member)

\_\_\_\_\_ Attendee Name

\_\_\_\_\_ Organization

\_\_\_\_\_ Address \_\_\_\_\_ City/State/Zip

\_\_\_\_\_ Phone \_\_\_\_\_ Fax \_\_\_\_\_ E-Mail

Check One:  Chapter Member  1st time Prospective Member  
 Spouse (name): \_\_\_\_\_

Attending:  Professional Development & Dinner  Dinner Meeting Only

**Guests please indicate payment via:**  MasterCard  Visa  Amex

Card#: \_\_\_\_\_ Exp Date: \_\_\_\_\_/\_\_\_\_\_/\_\_\_\_\_

Name on Card: \_\_\_\_\_ Signature: \_\_\_\_\_

Card Billing Address & Zipcode: \_\_\_\_\_